

# PARTNERSHIP OPPORTUNITIES *with* TENNIS WALES

Partner with Tennis Wales for access to great benefits, marketing opportunities, social impact projects and major tennis event tickets and hospitality.





# TENNIS GROWTH across WALES

**163,000**

children play tennis  
each year, with 27,000  
taking part weekly

Adults play tennis  
annually, right across  
Wales on 1,100 courts

**172,000**

**700**

500 volunteers & 200  
coaches are making  
tennis & padel more  
accessible than ever

Welsh teachers are  
delivering tennis in  
schools across the  
country

**1,250**



# WHY PARTNER

with **TENNIS WALES**



CLEAR SOCIAL IMPACT  
BENEFITS



INVEST IN GRASSROOTS  
TENNIS & PADEL PROGRAMMES



SUPPORT TALENTED WELSH  
PLAYERS



COMMUNICATE DIRECTLY  
WITH OUR TENNIS & PADEL  
COMMUNITY



SHOWCASE YOUR BRAND  
THROUGH OUR DIGITAL  
CHANNELS



SECURE WIMBLEDON TICKETS  
AND HOSPITALITY PACKAGES

# FLEXIBLE *and* TAILORED PARTNERSHIP RIGHTS

## DESIGNATION

Designation, the opportunity to refer to yourself as a 'Tennis Wales Partner'

## USE OF OUR BRAND

Use of our brand, the opportunity to use the Tennis Wales mark in any print and digital collateral to promote your investment into the game, as agreement

## BRANDING OPPORTUNITIES

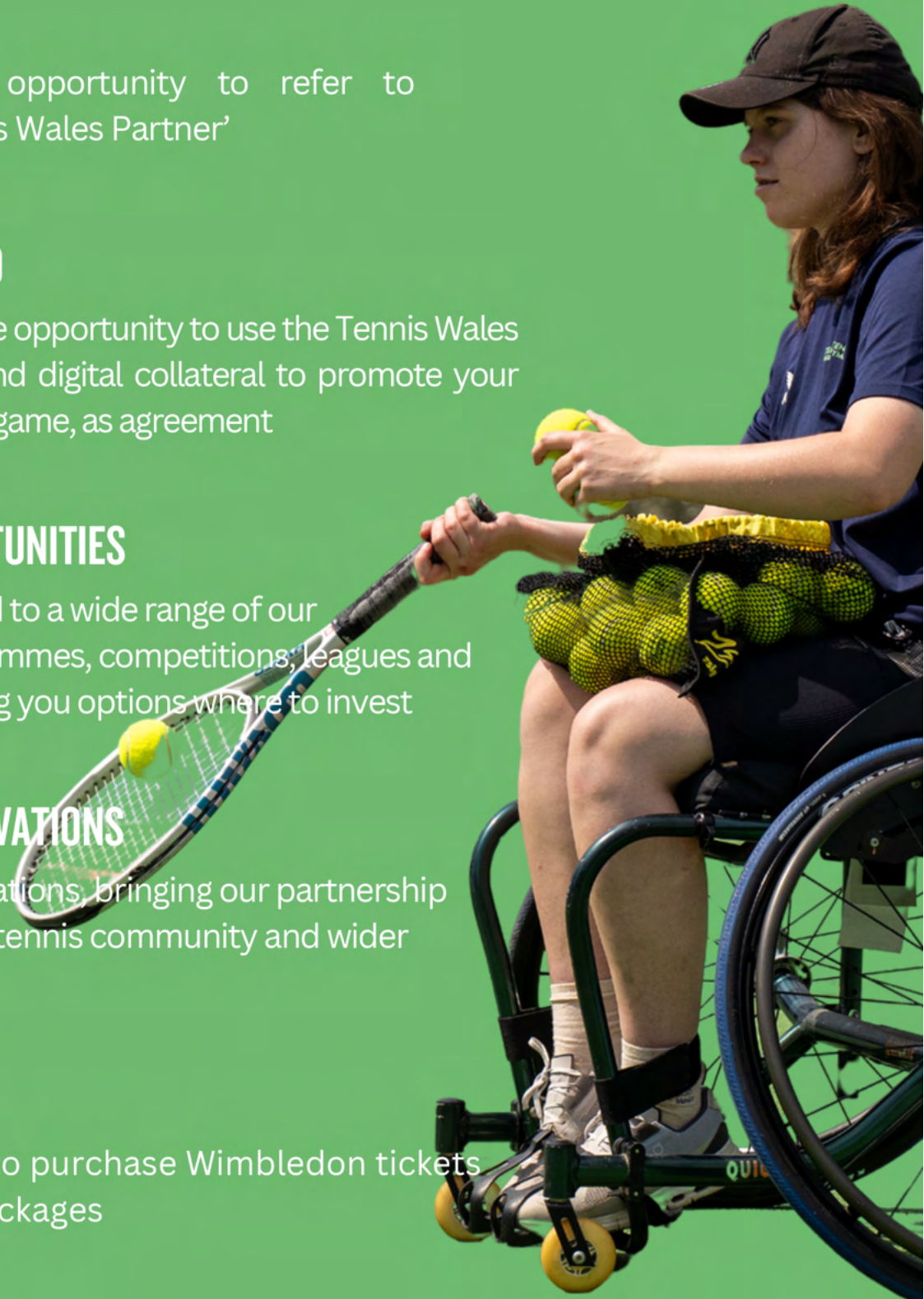
Opportunities linked to a wide range of our participation programmes, competitions, leagues and special events, giving you options where to invest

## DIGITAL & PR ACTIVATIONS

Digital and PR activations, bringing our partnership to life in the media, tennis community and wider public in Wales

## WIMBLEDON

Conditional right to purchase Wimbledon tickets and hospitality packages



# WANT TO GET INVOLVED?

	Bronze (£2,500 - £4,999)+VAT	Silver (£5,000 to £9,999)+VAT	Gold (£10,000 - £19,999)+VAT	Platinum (£20,000 +)+VAT
Become an official partner of Tennis Wales and use our landmark in promotion of the partnership				
Your brand placement on our website, social channels & digital communications to over 15,000 fans & followers				
Direct communication & marketing to our audience to promote your business or offer throughout the year				
Priority branding across all digital platforms, newsletters and regular feature in direct communications and at events				
Conditional right to purchase Wimbledon tickets at cost price and access to hospitality	1 to 2 pairs (beginning of tournament)	Up to 5 pairs (1st week of tournament)	Up to 8 pairs (dependent of days)	Up to 10 pairs (dependent of days)

# CHOOSE HOW *your* MONEY IS INVESTED?



## NATIONAL PERFORMANCE PROGRAMME

Partner Tennis Wales and support Welsh performance players as part of our flagship National Performance Programme.

We invest your partnership fee into;

- Player funding grants for talented players
- National & international tournament trips and travel
- National training camps, bringing our top players and coaches together
- Grants to performance coaching programmes in Wales
- Providing performance coach education for Welsh coaches



## TIE-BREAK FUND

Direct your partnership fee to our transformative tie-break fund, help open tennis up and transform Welsh communities.

We invest your partnership fee into;

- Initiatives supporting women & girls
- Open court programmes to make tennis more accessible to disabled people
- Welcoming new LGBTQ+ players and coaches into tennis and padel
- Expanding the game into rural communities
- Bursaries for training & qualifications to help more people into a tennis or padel career in Wales

# or SPONSOR A SPECIFIC EVENT IN WALES

## CYMRU NATIONAL TENNIS & PADEL CHAMPIONSHIPS



Our flagship annual event features over 600 of the top Welsh players competing to be crowned Welsh Champions. With juniors, seniors, wheelchair tennis, visually impaired events and Padel it's a fantastic week of tennis on show in August.

**Sponsor Fee; £7,500 plus VAT**

With 200 guests, VIPs and special guests, the annual Tennis Wales Awards recognise the incredible people and places that are opening tennis up, right across Wales in February. As lead sponsor, you'll have naming and branding rights for the event in Cardiff and play a big part in celebrating Welsh tennis & padel.

**Sponsor Fee; £5,000 plus VAT**

## TENNIS WALES ANNUAL AWARDS



## TENNIS EUROPE & ITF EVENTS IN WALES



As the Governing Body for Welsh tennis, we host international junior events, welcoming the top 12U, 14U and 18U players from around the world to our annual events in Wrexham & Newport. With some of the top international talent on show here in Wales, your sponsorship will be showcased internationally with naming and branding rights and local activation.

**Sponsor Fee; £10,000 (inc 3 events) plus VAT**

Welsh junior and senior teams compete internationally in the annual Four Nations competition, with teams from Under 12 to over 65 battling it out. This is a superb team event featuring more than 40 of the top players in Wales. Sponsors will benefit from annual sponsorship of all teams, naming rights and branding options on kit & clothing.

**Sponsor Fee; £10,000 plus VAT**

## TEAM WALES



# WHAT'S NEXT?



**CHOOSE YOUR PACKAGE**

**DECIDE HOW YOU WOULD LIKE  
YOUR MONEY INVESTED**

**GET IN TOUCH TO  
DISCUSS FURTHER**

## GET IN TOUCH



**SIMON JOHNSON (CHIEF EXECUTIVE)**

[simon.johnson@tenniswales.org.uk](mailto:simon.johnson@tenniswales.org.uk)

**MARIA REES (OPERATIONS MANAGER)**

[maria.rees@tenniswales.org.uk](mailto:maria.rees@tenniswales.org.uk)