



# ENVIRONMENTAL SUSTAINABILITY UPDATE

Securing a lasting future for tennis in Britain

June 2024





# FOREWORD

## BY SCOTT LLOYD

**Welcome to the LTA's Biennial Sustainability Report 2024, which sets out the progress we have made towards delivering our overall Environmental Sustainability Plan, launched in 2022.**

To deliver our vision of Tennis Opened Up, it's critical that we address our own climate and environmental impacts and work with everyone involved in our sport to do the same, and secure a lasting future for tennis in Britain.

The climate crisis and changes to the environment are impacting tennis at all levels, from international events around the world to local courts across Britain. A greater number of tennis venues than ever are at risk of regular and more severe flooding, while more extreme temperatures are increasingly impacting delivery of events, and the wellbeing of players who participate at them.

As the national governing body for tennis in Britain, it is vital that we play our part, not just in tackling our own impacts on the environment around us, but also in engaging the wider tennis community and supporting them to make a positive difference.

That is why our Environmental Sustainability Plan is so important, ensuring that we safeguard our sport, and the places it is played, for future generations.

We've already made significant progress in delivering this plan. As an organisation, we have developed a sustainable sourcing code for our suppliers, ensuring that the businesses we work with are aligned with our sustainability ambition, and we've also offered sustainability training to all LTA colleagues.

We've also taken action at our facilities in Roehampton and Nottingham, with electricity and gas usage reduced by 20% and 33% respectively thanks to building upgrades at the National Tennis Centre, while 21% of the Lexus Nottingham Tennis Centre's energy in 2023 came from on-site solar panels. All energy at both of our facilities is now sourced from green suppliers.

Our grass court events are among some of the most popular sporting events of the British summer, and with that in mind, we have worked to ensure these events meet high standards of sustainability.

This has included reducing single use plastic waste through our reusable cups scheme, and a partnership with BRITA, which from 2024 will see all water at our major events provided via BRITA dispensers and refillable bottles to players, officials, and ticket holders, removing more than 100,000 single-use bottles. Meanwhile, we've been working with our catering provider to reduce food waste, and source food locally and sustainably, and ensured all our temporary power generators use HVO fuel, with substantially reduced emissions compared to fossil fuels.

Players across the country have been buying into the drive to become more sustainable, as the LTA

Pledgeball League saw thousands of pledges in 2023 by participants at LTA registered venues to make sustainable changes to their daily lives.

The league is back for 2024, running from June to September, giving players at tennis venues across the country even more chances to commit to making sustainable changes. We've also provided resources and guidance for tennis venues, and begun to embed sustainability within our facility investment programmes.

As we embark on our updated business strategy, and mission to transform communities through tennis, we have refreshed our sustainability plan, dialling up the areas which will have the greatest impact and building on what we have learned over the last two years.

To ensure we can monitor progress towards our sustainability goals, we have identified 15 key metrics, which are measurable and will allow us to effectively track, year-on-year, how we are delivering on the LTA's overall sustainability aims and ambition.

Our focus areas will remain the same: leading the way for tennis in Britain on sustainability; ensuring sustainable operations across the LTA's facilities; delivering sustainable events and competitions; and promoting and advocating sustainability across the tennis community.

Whilst we are in a strong position to bring about sustainable change, we cannot do it on our own. It will require everyone involved in tennis in Britain to come together to secure the sport we love for future generations. Thank you to everyone who is playing their part.



**Scott Lloyd,**  
LTA Chief Executive



# ENVIRONMENTAL SUSTAINABILITY AND TENNIS

**The climate crisis, resource scarcity and changes to the environment are global issues, but will impact tennis in Britain at all levels.**

Tennis is increasingly affected by environmental change around the world, particularly as a result of extreme weather events and increasing temperatures.

Whether it be the impact of more extreme temperatures on Britain's summer major events, or rising sea levels and severe weather meaning a higher proportion of tennis venues are at risk of regular flooding, it is critical that we play our part in tackling these issues.

It is also clear that these impacts will not be distributed equally across society and will particularly fall on those underserved communities where tennis is less well established.

Protecting and supporting the environment is therefore critical to the LTA's vision of tennis opened up, and mission to transform communities through tennis.

We know we have a role to play in tackling our direct impacts across our operations and the major events that we deliver. However, the LTA also wants to engage with and support the wider tennis community to be more sustainable in our role as national governing body for the sport in Britain. In doing so, we know that we can have a positive impact far beyond our own operations and events, but also ensure that we are able to safeguard our sport, the places it is played, and the communities we serve, for the future.



**OUR VISION:**  
**TENNIS**  
**OPENED UP**

**OUR ENVIRONMENTAL SUSTAINABILITY MISSION:**

To secure a lasting future for tennis in Britain, through positive action on climate change and leadership in sustainability.

**OUR SCOPE:**

**LTA AS AN ORGANISATION**

**LTA AS AN EVENT OWNER AND OPERATOR**

**LTA AS NATIONAL GOVERNING BODY FOR TENNIS IN BRITAIN**

Control

Influence

# PRIORITY ENVIRONMENTAL THEMES

Through our Environmental Sustainability Plan we are focused on three priority themes, each with a long-term objective for 2030. These themes are distinct, but also inherently interrelated.



## CLIMATE ACTION

Achieve net zero carbon emissions from LTA operations and major events by 2030 and support the wider tennis community in reducing carbon emissions



## NATURAL ENVIRONMENT

For tennis in Britain to have a net positive impact on biodiversity



## RESOURCE EFFICIENCY

Utilise resources efficiently to reduce waste and energy usage from LTA operations and major events, and support the tennis community to do the same

# DELIVERING OUR ENVIRONMENTAL SUSTAINABILITY PLAN

Over the last two years we have been focused on delivering the establishment phase of our Environmental Sustainability Plan through four strategic impact areas:

## 1: EMBEDDING SUSTAINABILITY

## 2: SUSTAINABLE FACILITIES AND OPERATIONS

## 3: SUSTAINABLE EVENTS AND COMPETITIONS

## 4: PROMOTING, SUPPORTING AND ADVOCATING FOR SUSTAINABILITY



Significant work has been undertaken across each of these strategic impact areas. For the establishment phase, we set ourselves a series of challenging targets and actions, and good progress against each of these has been made.

Whilst we've not fully achieved all targets originally set within the establishment phase, we've made progress in all areas, achieving 8 of the 10 targets that we set ourselves. We have also been able to

achieve a number of targets which we originally set ourselves for the first full phase of our plan for 2024-2026.

Given the scale of the issues represented by the climate crisis and changes to the environment, it is appropriate that we continue to challenge ourselves, and continue to drive change at pace, focusing on the areas which will drive the greatest overall impact.

# 1 EMBEDDING SUSTAINABILITY

Objective: to ensure that sustainability is systematically embedded in LTA decision-making processes and business practices.







## PROGRESS MADE

- An internal governance structure has been established, and ways of working, to ensure sustainability is embedded across the business, with a project group comprising colleagues around the business, and various specific working groups related to strategic impact areas, such as major events. Oversight and ultimate accountability sits with the LTA Executive team. This governance structure has been reviewed and appropriate changes will be made in line with a refreshed 2024 – 2026 Plan to maintain accountability and deliver progress.
- Sustainability training has been delivered to the LTA Executive and Leadership teams and offered to all LTA colleagues and a number of colleagues have undertaken further training, for instance around Carbon Literacy.
- A Sustainable Sourcing Code has been developed for LTA suppliers and funded partners, to ensure alignment with the LTA's sustainability ambition. This includes focus on areas such as legal compliance, carbon emissions, waste management, ethical product sourcing (including ensuring forest risk commodities are sourced legally), and modern slavery. Given the LTA's emissions are driven to a significant extent by scope 3 emissions, this will provide a vital basis for continued engagement and collaboration looking ahead.
- Environmental considerations are now being incorporated into supplier contracts and agreements where relevant, to ensure sustainability is systematically considered within decision making.

- A more detailed analysis of the LTA's carbon footprint has been produced, to inform priorities for significantly reducing emissions. The LTA is working with key suppliers to collect activity data, further improving the accuracy of emissions reporting and identifying ways to drive reduction.
- Sustainability has been fully integrated into the LTA's 2024 – 2026 business strategy as part of the 'LEAD' pillar.
- The LTA Tennis Foundation has developed an Environmental Sustainability statement, endorsing and aligning with the LTA's Plan.

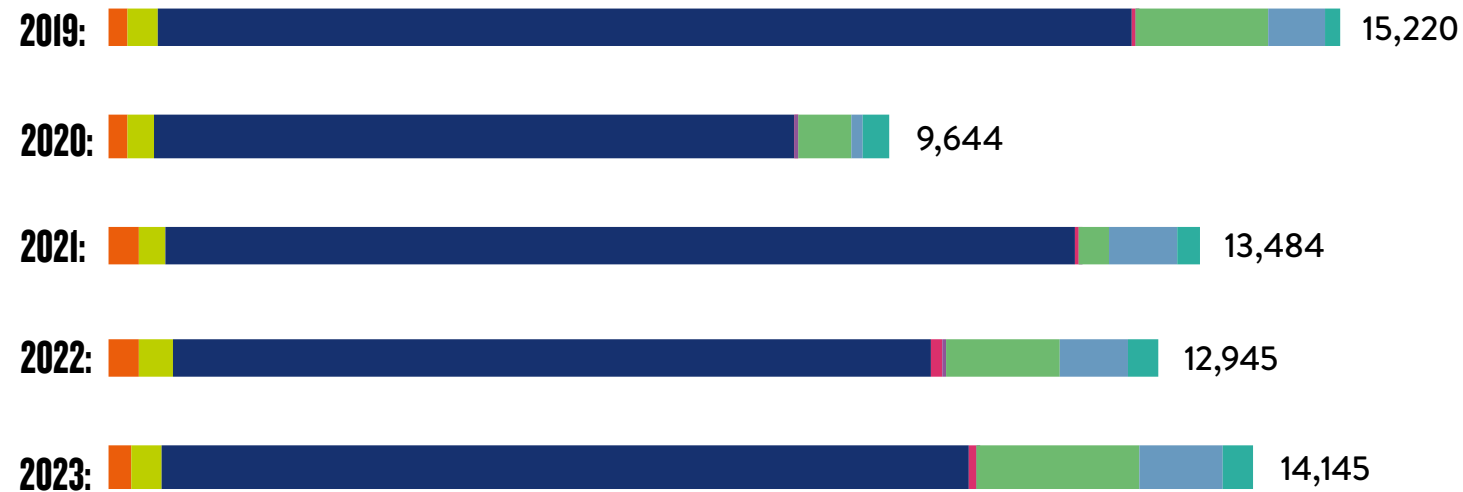


## DELIVERING ON OUR TARGETS

- This comprehensive report fulfils our commitment to publish a biennial update on progress against our plan.
- All LTA reserve funds and investments are held in ethical/sustainable portfolios. The default pension fund for LTA colleagues is the most sustainable available through its provider.
- Progress has been made towards achieving ISO20121 certification for sustainable management of our events. Whilst we have not received external certification, this is something we will be working towards in the coming years.
- A partnership with BRITA has been established to support delivery of our plan, significantly reducing single use plastic at the LTA's major grass court events and across LTA facilities at the National Tennis Centre and Nottingham Tennis Centre.

# LTA CARBON FOOTPRINT

## Annual emissions (tonnes CO<sub>2</sub>e)



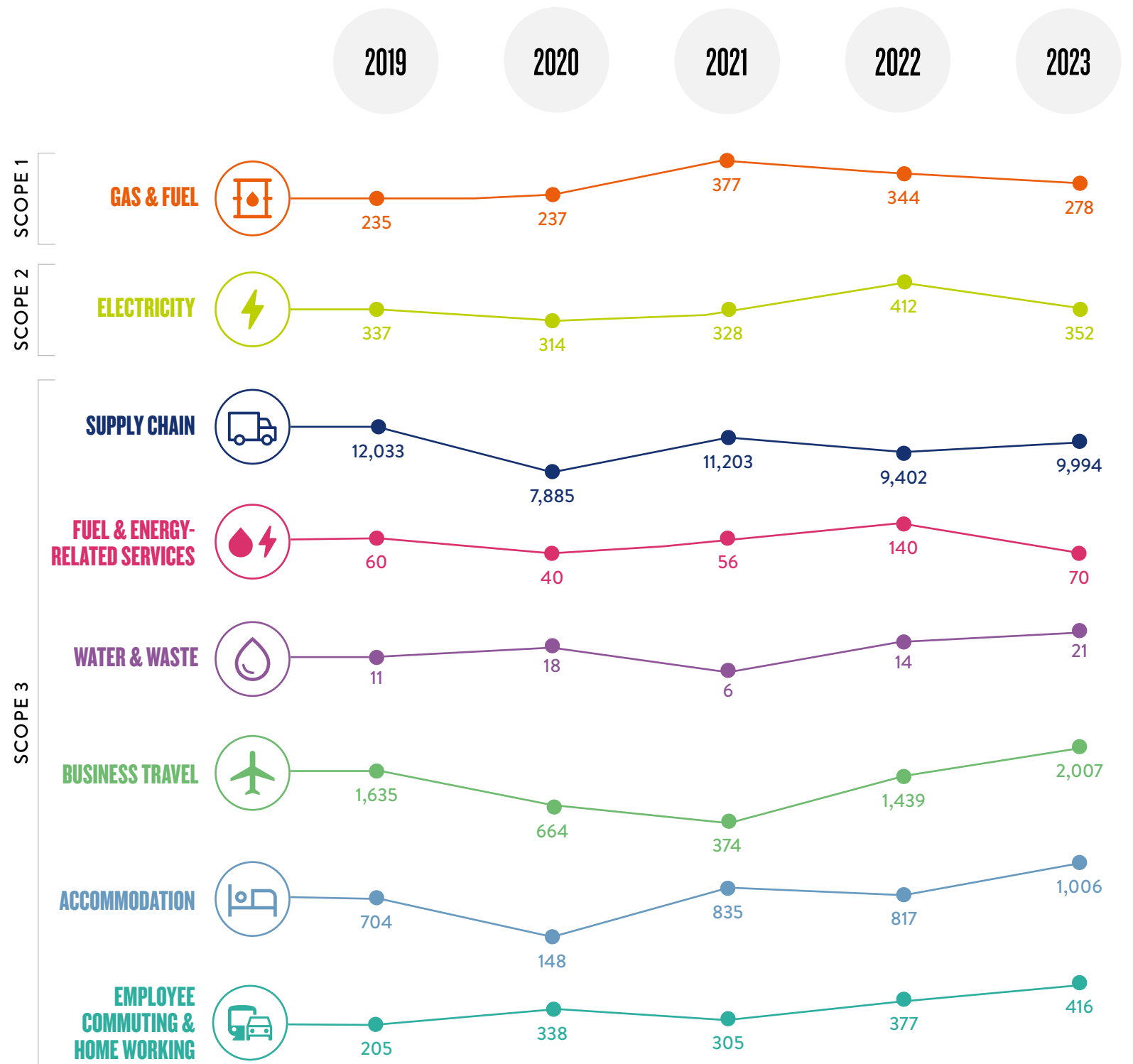
The LTA's carbon footprint has been calculated based on available data across the last 5 years. To ensure a meaningful and accurate comparison, we have undertaken a retrospective update for our footprint between 2019 and 2022.

As part of this we have excluded the staging of "one-off" events which are not a regular element of the LTA's work, specifically the Billie Jean King Cup Finals in 2022, and Davis Cup Finals Group Stage in 2022 and 2023. By excluding these events, we are able to build a more representative view of the change in our annual emission totals each year. Additionally, as the LTA took on the operations of Nottingham Tennis Centre on a long-term basis in May 2022, we have added the carbon emissions associated with this facility to previous reporting years, proportionately, in order to provide a more accurate year-on-year comparison,

though the addition of this facility does not mean a material increase in the LTA's footprint across these years.

Overall, this retrospective update does show that progress has been made in recent years. Whilst 2020 and 2021 were impacted by the COVID-19 pandemic, the LTA returned to a more normal level of operational activity in 2022 and 2023. The LTA's footprint in both these years was below our 2019 baseline, despite additional expenditure to grow and support tennis in both 2023 and 2022, compared to 2019.

We know that we influence a wide range of indirect, third party emissions, and are continuing to understand our impact across a number of areas. As part of this, we are working with our key suppliers and partners to further improve the accuracy of our carbon footprint.



# 2 SUSTAINABLE FACILITIES AND OPERATIONS

Objective: to ensure the management and operation of the LTA's own facilities and activities meet high standards of sustainability.



## CLIMATE ACTION



- Upgrades have been made to improve energy efficiency across LTA facilities, including LED lighting, upgrading meeting rooms and office areas to PIR sensors and upgrading the mechanical plant at the NTC. This has been coupled with better building systems and improved control management, to reduce energy usage overall.
- Electric vehicle charging points are available at both the National Tennis Centre and Lexus Nottingham Tennis Centre.
- The number of secure cycle parking racks at the National Tennis Centre has been increased to encourage more colleagues and visitors to choose active travel.

## RESOURCE EFFICIENCY



- An increased number of water refill points are available across LTA facilities, to support move away from single use plastic bottles.
- Lexus Nottingham Tennis Centre has become a paperless venue with the facility transitioning their operations to digital. The number of printers and photocopiers at the National Tennis Centre has been reduced, supporting a reduction in paper.
- Measures to reduce water usage have been introduced, including installation of a new, more efficient irrigation system at the National Tennis Centre.
- A review of IT policies has been undertaken to ensure technology hardware is provided on a needs basis to extend the lifetime of equipment. Equipment which is no longer suitable for use by the LTA is, where possible, donated to charities for continued use.
- A supplier rationalisation exercise has been undertaken, including to help minimise deliveries needed to LTA facilities.

## NATURAL ENVIRONMENT



- Initiatives supporting and enhancing biodiversity have been delivered at the National Tennis Centre and Lexus Nottingham Tennis Centre, such as bug hotels, “no mow” areas and birdboxes installed.
- An improved menu has been delivered at the Deuce café at the National Tennis Centre, including improved non-meat options, and local sourcing where possible. “Too Good to Go” initiative in place to reduce food waste from the café at the National Tennis Centre.

## PROGRESS MADE

# OUR IMPACT

## DELIVERING ON OUR TARGETS

- All electricity for LTA facilities is now sourced from green suppliers, with solar panels in place at the Nottingham Tennis Centre, following the LTA's acquisition of this facility in 2022
- All catering materials at the National Tennis Centre are now reusable or recyclable
- Lifetime of IT equipment has been extended by over 25% by increasing the default time when hardware is replaced by an additional year
- Key suppliers are now required to confirm that any forest risk commodities are sourced legally, to help protect the world's forests

**20% REDUCTION  
IN ELECTRICITY USE**

— **AT THE NATIONAL  
TENNIS CENTRE IN 2023** —

— COMPARED TO 2022 —

**21% OF  
ELECTRICITY USE**

— **AT THE LEXUS  
NOTTINGHAM TENNIS CENTRE** —

**GENERATED BY  
ON-SITE SOLAR PANELS**

— IN 2023 —

**33% REDUCTION  
IN GAS USE**

— **ACHIEVED AT  
THE NATIONAL  
TENNIS CENTRE  
IN 2023** —

— COMPARED TO 2022 —

**40% REDUCTION  
IN WATER USE**

— **AT THE  
NATIONAL  
TENNIS CENTRE** —

— SINCE 2019 —

# 3 SUSTAINABLE EVENTS AND COMPETITIONS

Objective: to ensure LTA events and competitions meet high standards of sustainability and are credible to promote sustainability to a wide audience.





## CLIMATE ACTION



- A deeper understanding of carbon emissions related to our major events, particularly from the provision of goods and services, has meant we have been able to prioritise event suppliers to collaborate more closely with them in order to begin to more effectively manage carbon.
- We have built relationships with other tennis bodies, particularly AELTC and ATP, to share good practice in tennis and opportunities for collaboration.
- Working with broadcast partner, the BBC, coverage around our summer major events highlighted the challenges to tennis from the climate crisis and changes to the environment.
- We have engaged with fans around our events to take positive climate action, including through promoting public transport options, and low carbon “eco options” across menus on-site.

## PROGRESS MADE



## RESOURCE EFFICIENCY



- To minimise waste, a reusable cup scheme has been in place since 2022 to reduce single use plastic waste. Reusable glass bottles were also introduced into cinch Championships hospitality in 2023, and will be used in hospitality across other events in 2024.
- Branding materials from the 2022 event were recycled to produce media bibs and bottle-holders for ball crew at the 2023 cinch Championships.
- Staff clothing is stored and reused across major events where possible, to use on a multi-year basis.
- A new partnership is in place with BRITA, removing all single-use plastic water bottles from the LTA's summer major events. BRITA will provide water across our ATP and WTA events in Nottingham, Birmingham, Eastbourne

and The Queen's Club in London via BRITA dispensers and refillable bottles to players, officials, and ticket holders, with refill stations courtside, in player lounges, and in public areas. A refillable water pilot was undertaken for players at the cinch Championships in 2023.

- Previously printed tickets for major events were replaced with digital tickets, reducing both waste and the emissions related to deliveries.
- Used tennis balls across major events are sold with proceeds going towards the **LTA Tennis Foundation**.
- We have begun to embed changes made at our major events throughout the Performance Competitions Calendar, in areas such as waste, water and travel as well as planning swings of tournaments to reduce travel impacts.

## NATURAL ENVIRONMENT



- A new catering provider across the LTA's summer major events has ensured more sustainable sourcing of food using local suppliers where possible, with a wider range of plant-based options, and partnerships with local food charities helping to reduce food waste.



# OUR IMPACT

## DELIVERING ON OUR TARGETS

- All temporary power generators at the LTA's summer major events now use Hydrotreated Vegetable Oil, a fossil-free fuel which can offer 90% reduced emissions compared to regular diesel
- Thanks to our partnership with Lexus 20% of tournament fleet vehicles at the LTA's 2024 summer major events will be electric vehicles, with the majority of remaining vehicles being hybrid models
- All catering materials at the LTA's major events are recyclable or reusable
- Key major event suppliers are required to confirm that any forest risk commodities are sourced legally, to help protect the world's forests

## ACROSS OUR SUMMER GRASS COURT MAJOR EVENTS:

**200,000**  
**SINGLE-USE**  
**CUPS SAVED**  
THROUGH OUR  
**REUSABLE CUP SCHEME**

**100,000**  
**SINGLE-USE**  
**BOTTLES SAVED**  
THANKS TO OUR  
**BRITA PARTNERSHIP**

**16 FULLY**  
**ELECTRIC**  
**VEHICLES USED**  
IN THE  
**TOURNAMENT CAR FLEET**

## AT THE CINCH CHAMPIONSHIPS:

**3,000 MEALS**  
**PROVIDED TO LOCAL**  
**CHARITIES IN 2023**  
SIGNIFICANTLY  
**REDUCING FOOD WASTE**

**40% REDUCTION**  
**IN GENERAL WASTE**  
**SINCE 2019**  
INCLUDING A **17%**  
**REDUCTION IN 2023**  
COMPARED TO 2022

**5 TONNE REDUCTION**  
**IN GLASS WASTE IN 2023**  
COMPARED TO 2022  
THANKS TO  
**REUSABLE GLASS BOTTLES**  
**IN HOSPITALITY AREAS**

# 4 PROMOTING, ADVOCATING AND SUPPORTING SUSTAINABILITY

Objective: to use the LTA's position as national governing body to support, promote and encourage the uptake of sustainability practices across tennis in Britain.





## PROGRESS MADE:

- Messaging and content on sustainability has been incorporated across the LTA's channels to communicate to key audiences like fans and players, and grow awareness of the importance of our sport taking action to support and protect the environment.
- We have run a number of sessions with performance players, to understand their views on sustainability and inform how we might engage elite players more widely to consider their impact and how they can take positive action, in the future.
- Support has been provided to venues through development of a toolkit on sustainability with a range of resources including a template sustainability policy and action plan, and guidance on improving energy efficiency.
- A range of benefits are available for registered venues through the LTA Buying Group, including provision of fully green tariffs, access to solar and electric vehicle charging provision, and discounted access to an online sustainability platform to map and reduce carbon emissions.
- Through our partnership with the charity Pledgeball, we have delivered the LTA Pledgeball League. Through the league, tennis players at LTA registered venues submit pledges on behalf of their venue via the Pledgeball website. Pledges comprise simple, every day actions by individuals, which have a positive impact in supporting the environment and reducing carbon emissions, with a leaderboard among venues adding a competitive element. In 2023, thousands of pledges were made across registered venues equating to over 15 tonnes of carbon emissions saved. The league is running again in 2024 to engage venues, and the people who play at them, in sustainability.
- The Quick Access Loan Scheme, funded by the LTA Tennis Foundation, now provides funding for venues to transition halogen floodlights to more energy efficient LED lighting, reducing energy usage and saving cost.

## DELIVERING AGAINST OUR TARGETS

We have already ensured that all LTA facility investment has a sustainability element. All recipients of funding through the LTA's Quick Access Loan scheme are required to demonstrate they have considered the impact of developments on the environment, and put in place a sustainability plan for their venue as a condition of funding.

**IN 2023**  
**1000s**  
**OF PLEDGES WERE MADE**  
**THROUGH THE LTA PLEDGEBALL LEAGUE**

**EQUATING TO OVER**  
**15 TONNES**  
**OF CARBON EMISSIONS**  
**SAVED**

# OUR FOCUS FOR 2024-2026

## REFRESHING OUR PLAN

Environmental sustainability has been embedded within the LTA's overall 2024-2026 business strategy. Given this, and progress over the last two years, we have undertaken a review and update of the LTA's overall sustainability plan.

The LTA's overall ambition and long-term objectives on climate action, resource efficiency and natural environment, remain the same.

We also broadly retain our four strategic impact areas, with a minor change to reflect the LTA's role in providing leadership for tennis in Britain in sustainability. To evidence progress across these strategies, we have identified fifteen key metrics, which are measurable and will allow us to effectively track, year-on-year, whether we are delivering against the LTA's overall sustainability aims

and ambition. Ultimately, targets will be set for each of these on an annual basis, helping to evidence progress. For 2024, the focus in a number of areas will be to establish an accurate baseline.

Within each of these strategic impact areas, we have identified a series of actions, which will be prioritised over the next three years, with a detailed delivery plan sitting beneath each.

# LEADERSHIP IN SUSTAINABILITY

Lead tennis in a sustainable way and ensure sustainability is systematically embedded across the LTA.

## KEY METRICS

- **REDUCE** carbon emissions from procurement of goods and services
- **REDUCE** carbon emissions from colleague business travel
- **INCREASE** in county and other member organisations having a sustainability policy

## WHAT WE'LL DO

- Conduct a climate risk audit for tennis in Britain, to understand and support resilience and adaptation in how tennis is delivered, in the face of changes to the climate and environment.
- Advocate for international tennis bodies to consider climate change action as a priority.
- Develop a performance player engagement plan to improve knowledge on and advocacy for climate crisis and sustainability.
- Develop and implement a sustainable travel policy for colleagues, including exploring colleague incentives to promote positive environmental choices.
- Introduce departmental carbon budgeting, to drive reduction in emissions.
- Deliver improved new supplier management processes to include Sustainable Sourcing Code requirements.
- Improve collection and tracking of supplier carbon emissions data to better understand scope 3 impact and deliver innovative actions to reduce.
- Embed sustainability into LTA's county governance framework and provide support to member organisations in developing sustainability policies.



# SUSTAINABLE FACILITIES AND OPERATIONS

Ensure LTA owned facilities and business operations meet high sustainability standards.

## KEY METRICS

- **REDUCE** carbon emissions from energy use at LTA owned facilities
- **REDUCE** waste from LTA owned facilities
- **REDUCE** potable water consumption at LTA owned facilities
- **INCREASE** biodiversity at LTA owned facilities



## WHAT WE'LL DO

- Conduct energy audit of the National Tennis Centre and Lexus Nottingham Tennis Centre to identify further opportunities to reduce emissions related to gas and electricity use.
- Review technology infrastructure and LTA ways of working and identify energy saving initiatives.
- Conduct audit of the National Tennis Centre and Lexus Nottingham Tennis to identify feasible options to reduce potable water use, and harvest rainwater.
- Prolong the lifecycle of operational equipment e.g. grounds machinery and laptops.
- Develop and deliver a waste reduction plan for the National Tennis Centre and Lexus Nottingham Tennis, including removing single-use and short-life materials, and initiatives to reduce food waste.
- Develop and deliver biodiversity action plans for the National Tennis Centre and Lexus Nottingham Tennis Centre.



# SUSTAINABLE EVENTS AND COMPETITIONS

Ensure LTA events and competitions meet high sustainability standards, and are credible in promoting sustainability.

## KEY METRICS

- **REDUCE** carbon emissions from energy use at LTA major events
- **REDUCE** waste from LTA major events
- **ACHIEVE** ISO20121 sustainability management system certification

## WHAT WE'LL DO

- Analyse energy use at major events and implement solutions to reduce carbon related emissions, including exploring innovative options for on-site renewable energy.
- Deliver sustainable water solution at major events to remove single use plastic bottles.
- Develop and deliver a waste reduction plan for events and competitions, including working with key suppliers to ensure utilisation of sustainable materials, and initiatives to reduce food waste.
- Develop sustainable management system for major events.



# PROMOTING ADVOCATING AND SUPPORTING SUSTAINABILITY

Use the LTA's position to support, promote and encourage sustainability across tennis in Britain.

## KEY METRICS

- **INCREASE** in LTA registered venues that have a sustainability policy
- **INCREASE** biodiversity at LTA registered venues
- **INCREASE** in tennis workforce completing sustainability training
- **REDUCE** impact of fans and players by encouraging positive action
- **INCREASE** in awareness of sustainability among children and young people



## WHAT WE'LL DO

- Embed sustainability into training and education opportunities to the tennis workforce.
- Enhance sustainability venue support toolkit, support venues in creating their own sustainability plans and recognise good practice.
- Explore options, including innovative partnerships, to provide investment to venues to deliver sustainability initiatives.
- Introduce requirement for recipients of facility investment to put in place initiatives to support biodiversity, as a requirement of funding.
- Develop and deliver a player and fan engagement plan that promotes positive environmental action.
- Integrate sustainability messaging into LTA Youth to raise awareness and encourage action among young people.
- Deliver nationwide tennis ball recycling scheme.

